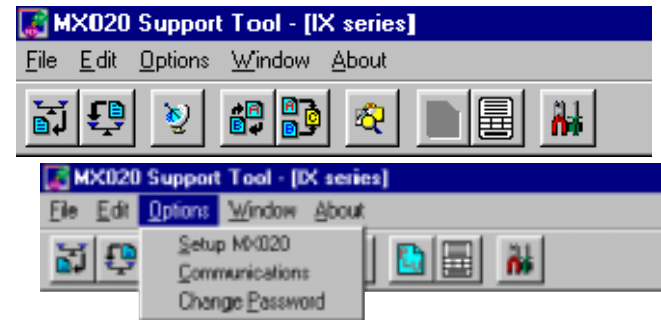


MX020 Scale Support Software

Scale Supplied with MX020 -

Microsoft Windows® based software package with user friendly dropdown menus and tool bars. Picture Icons are used to help navigate the most used functions.



Label Design, Formatting & Previewing -

On screen label design with easy to use drag and drop formatting. True 'scale fonts' used in preview to ensure that what you see is what you get.

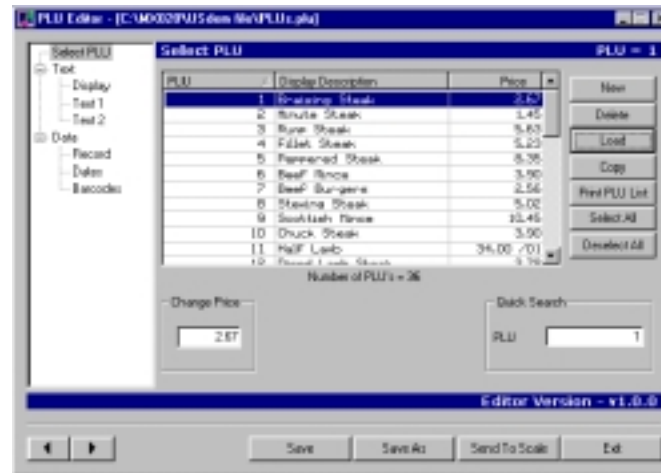


Product File Creation & Editing Functions -

A fast and affective way to create or edit new or existing product text and pricing.

Allows a quick and easy way to print the scales product file lists by use of a remote PC printer.

Enables backup files and scale data to be easily stored to a PC.



MX020 Operating Requirements -

Hardware requirements:

- Minimum 233/ Pentium processor
- Minimum 16 MB RAM
- Minimum 20 MB hard disk space
- SVGA monitor
- CD ROM drive for installation
- Mouse

Operating systems supported:

- Microsoft Windows NT4 or later, Windows 95, Windows 98, windows ME, Windows 2000 and Windows XP

SALTER Brecknell

BK500 Series

Retail Printing Scales



New Generation

- Pre-pack, label & receipt printing from one scale
- Fast loading printer with take up spool
- Customer friendly alpha-numeric display
- Network capability for up to nine scales
- Cash drawer & scanner connections as standard
- Easy to program
- 1000 PLU data memory
- Programmable print formats



Salter Brecknell Weighing Products

P.O. Box 9533, Smethwick, West Midlands, B66 2TE

Tel: 0870 444 6132 Fax: 0870 010 2241
E-mail: sales@salterbrecknell.co.uk
www.salterbrecknell.co.uk



a division of Avery Weigh-Tronix

VALUE IN WEIGHING



BK500 Series

Retail Printing Scales

Specifications

	BK500NG Built-in display label/receipt printer	BK502NG Tower display label/receipt printer	BK510NG Built-in display receipt printer	BK512NG Tower display receipt printer
Capacity				
6 kg x 1 g	✓	✓	✓	✓
12 kg x 2 g	✓	✓	✓	✓
15 kg AVR(6 kg/15 kg x 2 g/5 g)	✓	✓	✓	✓
Display				
Built-in displays	✓		✓	
Tower display		✓		✓
Display type	Alpha-numeric LCD	Alpha-numeric LCD	Alpha-numeric LCD	Alpha-numeric LCD
Backlight	Green	Green	Green	Green
Digit size	12 mm	12 mm	12 mm	12 mm
Lines of text	2	2	2	2
Keyboard				
Total keys	57	79	57	79
Direct PLU keys	34	56	34	56
Scale Functions				
Number of operators	8	8	8	8
Tax rates	3	3	3	3
Networking	Up to 9 scales	Up to 9 scales		
Carcass traceability	✓	✓	✓	✓
Tare stores	9	9	9	9
Payment types	5	5	5	5
Discount rates	3	3	3	3
Data memory size (products / prices)	1000	1000	500	500
Security levels	3	3	3	3
Pre-pack	✓	✓		
Printer				
Label printer	✓	✓		
Receipt printer	✓	✓	✓	✓
Print Data				
Store name (characters)	200	200	200	200
Group name (characters)	20	20	20	20
Label formats	5	5		
PLU text line 1 (characters)	40	40	40	40
PLU text line 2 (characters)	250	250		
Font sizes	3,6,C,D,F,I,K,R	3,6,C,D,F,I,K,R	3,6,C,D,F,I,K,R	3,6,C,D,F,I,K,R
Display text (characters)	16	16	16	16
Barcode	EAN13, EAN8, UPC12, UPC13 Scandinavian			
Paper size				
Printer speeds	56 mm/ sec	56 mm/ sec	56 mm/ sec	56 mm/ sec
Paper roll size (Diameter x width)	100 mm Ø x 56 mm	100 mm Ø x 56 mm	100 mm Ø x 56 mm	100 mm Ø x 56 mm
Interfaces				
RS232 (PC or scanner interface)	9 way D type	9 way D type	9 way D type	9 way D type
RS232 (Cash drawer interface)	RJ12	RJ12	RJ12	RJ12
RS485 (Network interface)	RJ12	RJ12		
Support Software				
MX020 included	✓	✓	✓	✓
Housing Type				
Footprint size	375 mm x 405 mm	375 mm x 405 mm	375 mm x 405 mm	375 mm x 405 mm
Weighing platter size	345 mm x 275 mm	345 mm x 275 mm	345 mm x 275 mm	345 mm x 275 mm
Voltage				
220V - 230V	✓	✓	✓	✓
110V - 120V	✓	✓	✓	✓
Options				
Internal rechargeable battery	✓	✓	✓	✓
12 V external battery connection	✓	✓	✓	✓
L2 16" scoop	✓	✓	✓	✓
L2 12" scoop	✓	✓	✓	✓
G Pan fish shallow dish	✓	✓	✓	✓
C924 cash draw	✓	✓	✓	✓
Handheld 'Burch' CCD scanner	✓	✓	✓	✓
Handheld 'Gryphon' CCD scanner	✓	✓	✓	✓
3 metre network cable	✓	✓	✓	✓
5 metre network cable	✓	✓	✓	✓
10 metre network cable	✓	✓	✓	✓

Features

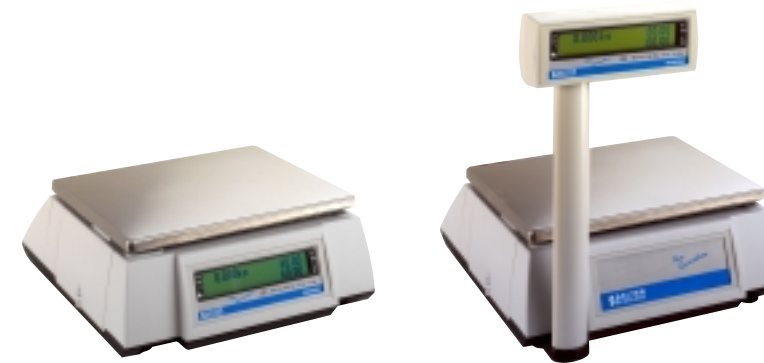
Stylish in design this New Generation of printing scales offers a range of unique features to enhance your counter service and improve business efficiency.

Designed to fit many environments whilst offering a compact footprint to suit a variety of counter sizes, this New Generation BK range provides retailers with a complete package to meet their essential needs.

Design -

BK500NG/BK510NG
One-piece modular design with built-in customer/vendor display.

BK502NG/BK512NG
One-piece modular design with customer/vendor tower display.



Weighing Capacities Available -

- 6 kg x 1 g
- 12 kg x 2 g
- 15 kg AVR (6 kg/15 kg x 2 g/5 g)

Display -

A two line backlit alpha-numeric LCD display provides clear indication of product, weight and price for the operator and the customer.

Printer -

BK500NG/BK502NG
Easy-access, thermal receipt and label printer with take-up spool for backing paper.

BK510NG/BK512NG
Easy-access, thermal receipt only printer.

Keyboard -

Wipe clean, tactile keyboard with audible bleep.
Fast number entry via cluster key arrangement.

Data Memory -

BK500NG/BK502NG
Details of 1000 products/prices can be stored and recalled.

BK510NG/BK512NG
Details of 500 products/prices can be stored and recalled.

Vendors -

With use of a programmable security PIN number, allows up to eight operators to serve customers from one scale.

Scales Interface -

RS232 interface allows easy connection to a PC or barcode scanner.

Cash draw interface supplied as standard.

The BK500NG/BK502NG are supplied with RS485 to allow up to nine scales to be networked together.

Management Reports -

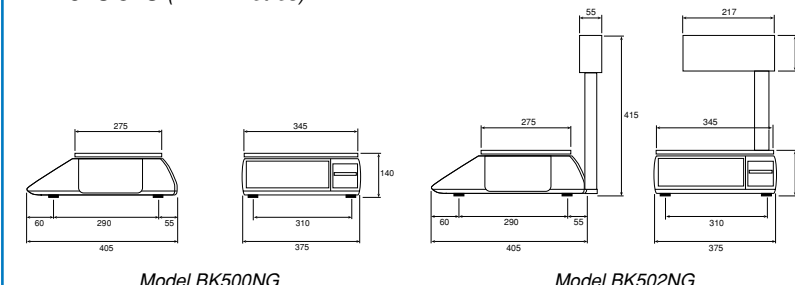
Including PLU, Group and operator totals.

Programming -

To support the BK5xx series of retail scales, Salter Brecknell's MX020 software supplied with every scale, provides the fundamental features for the setting up and maintaining of product and labeling information, all from a PC.



Dimensions (in millimetres)



Easy-access, thermal printer